



# New Product

Dual Spray 4+1 Nozzle Body  
DS41  
Left & Right Nozzle Body

Bulletin Date: March 1, 2024  
Bulletin Reference: 240301-01

# WILGER

Better Engineered Sprayer Components for Over 45 Years

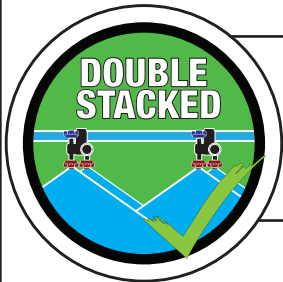
## WILGER Dual-Spray 4+1 ('DS41') Nozzle Body Super Compact & Robust Nozzle Body with Dual Solenoid Support

The DS41 nozzle body integrates a single by-pass nozzle body (optional for dual PWM/Spot-spray), as well as a robust 4-nozzle turret.

Part# 41900-00  
DS41R

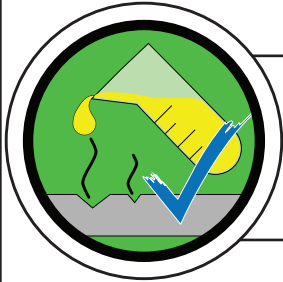
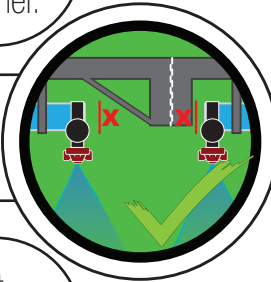


MSO check valve on both turret & bypass outlet



Ability to spray with one or both nozzles independent of each other.

Ultra compact & Narrow nozzle body

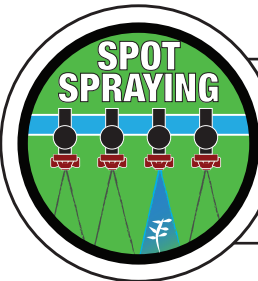
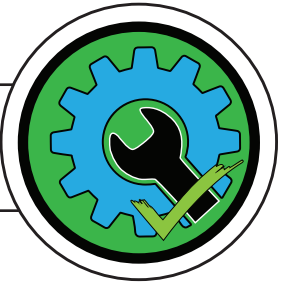


Chemical Resistant Polypropylene design resists acid and harsh chemicals



Spring-Lock Turret  
Positive Turret Positioning

Robust design with easy maintenance



Designed for dual solenoid use for spot spraying

### Part#s and current configurations (as of Mar 22, 2024)

Boom Size	Nozzle Outlets <sup>1</sup>	Inlet Size	Turret Module Position	Nozzle Bodies with 5/16" Bolt Mount Upper Clamp Module Configuration & Assembly Part#		
				-00	-MS1	-NM
				MSO on BOTH Bypass & Turret	MSO on Bypass No Module on Turret	No modules on Bypass & Turret
1" (1.315" OD)	4 CJ (Turret) 1 CJ (Bypass)	3/8" Inlet	RIGHT	41902-00	41902-MS1	41902-NM
			LEFT	41903-00	41903-MS1	41903-NM
1" High Flow (1.315" OD)	4 CJ (Turret) 1 CJ (Bypass)	High Flow 21/32" Inlet	RIGHT	41900-00	41900-MS1	41900-NM
			LEFT	41901-00	41901-MS1	41901-NM

### Not sure whether you have a LEFT or RIGHT BODY?

Consult the pictures or the type imprinted on the back of the nozzle body. DS41L (left) or DS41R (right)

<sup>1</sup> Nozzle Outlet options will also include a 4 Square Lug Outlet turret as an alternate configuration. Contact Wilger for information on part numbers.



# New Product

Dual Spray 4+1 Nozzle Body  
DS41  
Left & Right Nozzle Body

Bulletin Date: March 1, 2024  
Bulletin Reference: 240301-01

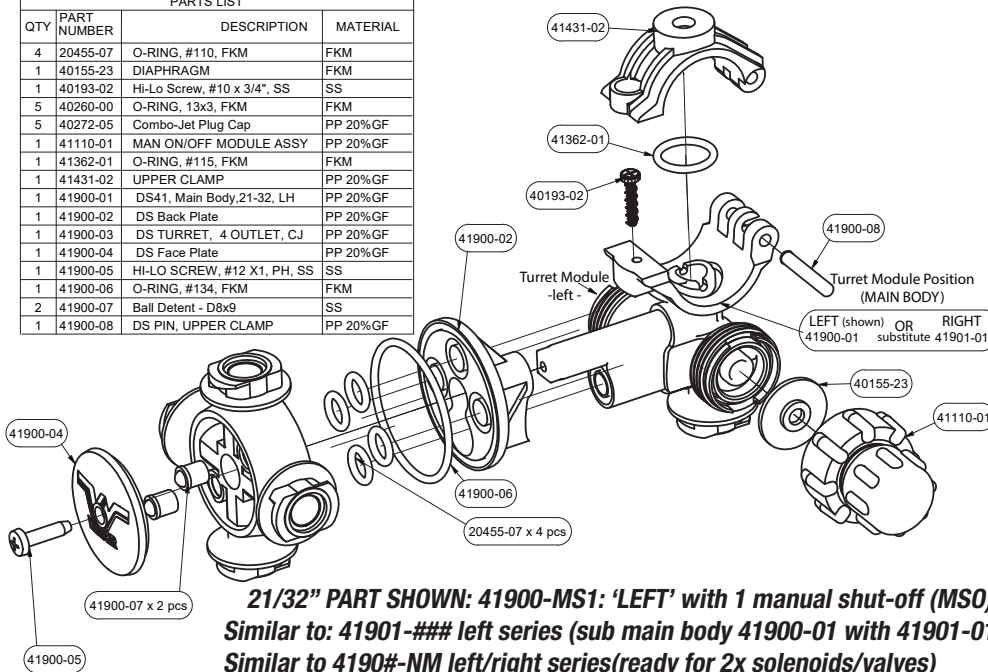
# WILGER

Better Engineered Sprayer Components for Over 45 Years

## WILGER Dual-Spray 4+1 ('DS41') Nozzle Body

### Product Drawing: High Flow #41900-MS1

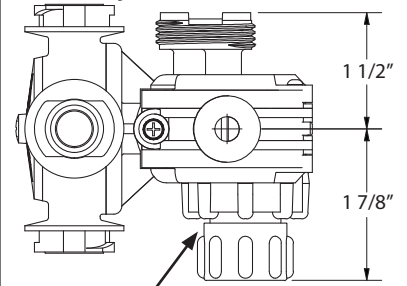
PARTS LIST			
QTY	PART NUMBER	DESCRIPTION	MATERIAL
4	20455-07	O-RING, #110, FKM	FKM
1	40155-23	DIAPHRAGM	FKM
1	40193-02	Hi-Lo Screw, #10 x 3/4", SS	SS
5	40260-00	O-RING, 13x3, FKM	FKM
5	40272-05	Combo-Jet Plug Cap	PP 20%GF
1	41110-01	MAN ON/OFF MODULE ASSY	PP 20%GF
1	41362-01	O-RING, #115, FKM	FKM
1	41431-02	UPPER CLAMP	PP 20%GF
1	41900-01	DS41, Main Body, 21-32, LH	PP 20%GF
1	41900-02	DS Back Plate	PP 20%GF
1	41900-03	DS TURRET, 4 OUTLET, C.J	PP 20%GF
1	41900-04	DS Face Plate	PP 20%GF
1	41900-05	HI-LO SCREW, #12 X1, PH, SS	SS
1	41900-06	O-RING, #134, FKM	FKM
2	41900-07	Ball Detent - D8x9	SS
1	41900-08	DS PIN, UPPER CLAMP	PP 20%GF



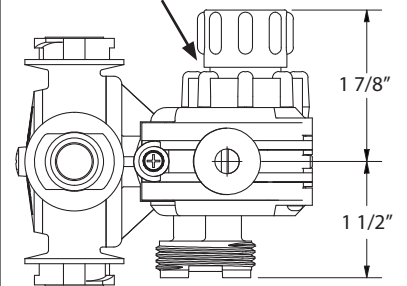
**2 1/32" PART SHOWN: 41900-MS1: 'LEFT' with 1 manual shut-off (MSO)**  
**Similar to: 41901-### left series (sub main body 41900-01 with 41901-01)**  
**Similar to 4190#-NM left/right series (ready for 2x solenoids/valves)**  
**Similar to 4190#-00 left/right (with two MSO knobs)**

### TOP VIEW

**41900-MS1: 'LEFT' with MSO**  
Ready to add PWM solenoid



**Manual Shut-off module controls the single 'back' outlet**



**41901-MS1: 'RIGHT' with MSO**  
Ready to add PWM solenoid

### Compatible Check Valve or Control Module Options

Wilger has a variety of check valves or control modules that are compatible with this product.

Consult the module options for the desired function.

#### Manual ON/OFF Check Valve (MSO)

When 'ON', acts as a check valve.  
When 'OFF', shuts off flow.



Available in 4PSI, 10PSI, or 15PSI check valve strength

#### Diaphragm Check Valve

Standard check valve opens at a certain pressure. (10 PSI standard)



Available in 4PSI, 10PSI, or 15PSI check valve strength

#### Air-OFF Module

When sufficient air pressure is sent to check valve (+20PSI over liquid), module flow is closed.



Available in 4PSI, 10PSI, or 15PSI check valve strength

#### Alternate Valve or PWM Solenoid

No module is typically used when a PWM solenoid or electronic shut-off is used.\*



A functional valve is required for operation

**CANADA**  
Wilger Industries Ltd.  
Site 412, Box 280, RR#4  
Capital Circle W & Auction Mart Rd.  
Saskatoon, SK, Canada S7K 3J7  
Phone: 1 (833) 242-4121  
Fax: (306) 242-4122  
Email: info@wilger.net

@WilgerParts

**UNITED STATES**  
Wilger Inc.  
255 Seahorse Drive  
Lexington, TN, USA  
38351-6538  
Phone: (877) 968-7695  
Fax: (877) 968-7613  
Email: WilgerEsc@WilgerEsc.com

@WilgerInc

**ARGENTINA**  
Wilger Argentina  
Mitre 699  
San Nicolas (2900)  
Buenos Aires, Argentina  
Phone: +54 9 336 4596710  
Email: cjpurras@gmail.com

**Focused on Application  
Performance for  
Over 45 Years**

[www.wilger.net](http://www.wilger.net)

All Wilger trademarks and logos are owned by Wilger Industries Ltd. All other brand or product names are trademarks or registered marks of their respective owners. All rights reserved.